

# Littleton Road/Kismet Parkway Realignment Project

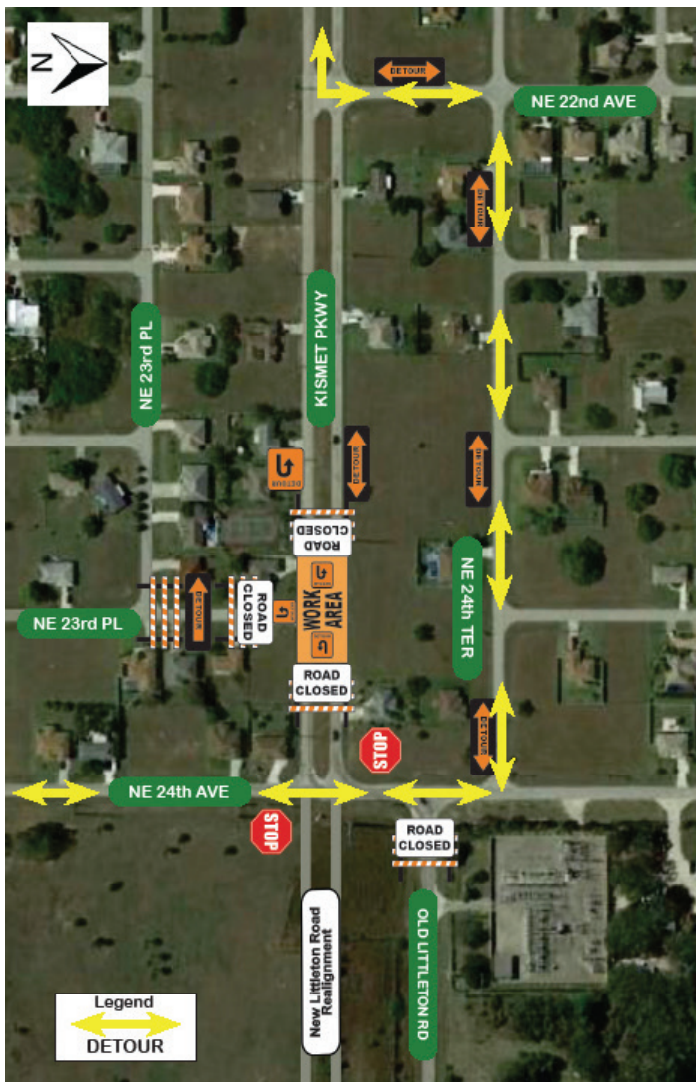
## From NE 24th Avenue to Corbett Road

November 12, 2020

***Kismet Parkway to temporarily close at NE 23rd Place  
Monday, November 16 through Wednesday, November 18***

**Beginning at 4 a.m. on Monday, November 16, Kismet Parkway will be closed in both directions at NE 23rd Place (see map below).** This closure is necessary for crews to complete underground utility work for the City of Cape Coral. Kismet Parkway is expected to reopen by early Thursday, November 19, weather permitting. Motorists may use NE 22nd Avenue to NE 24th Terrace to NE 24th Avenue, or other local roads as a detour.

Motorists also are reminded of **NEW STOP SIGNS** on NE 24th Avenue at Littleton Road/Kismet Parkway for northbound and southbound traffic. The roundabout at Littleton Road/Corbett Road is now fully operational. Motorists are urged to use caution as crews continue work in the roundabout.



Residences located within the closure will have access to their driveways.

For additional information about how to drive a roundabout, project info, and to sign up for project updates, please visit [www.LittletonRoadWidening.com](http://www.LittletonRoadWidening.com) or scan the QR code below. For more information about the current construction project, please contact:

**Jennifer Dorning**  
**Project Public Information Officer**  
 Email: [Jennifer.Dorning@AtkinsGlobal.com](mailto:Jennifer.Dorning@AtkinsGlobal.com)  
 Cell: 239-338-7723



See reverse for larger map

*Kismet Parkway to temporarily close at NE 23rd Place  
Monday, November 16 through Wednesday, November 18*

